



Specialty Materials

<http://www.specmaterials.com/>

## CORE COMPETANCY

**Specialty Materials, Inc. located in Lowell, MA are manufacturers of Boron and silicon carbide fiber products used primarily to reinforce advanced composite materials, and boron nanopowder for conversion to magnesium diboride. Our fibers are known throughout the world and used in aircraft, aerospace, sporting goods and industrial applications where the highest mechanical and physical performance properties are required.**

## KEY POINTS OF CONTACT

Ashley Hart – Senior Scientist

[ahart@specmaterials.com](mailto:ahart@specmaterials.com)

978-322-1973

James V. Marzik – Chief Scientist

[jmarzik@specmaterial.com](mailto:jmarzik@specmaterial.com)

978-322-1961

Monica Rommel – Chief Executive Officer

[mrommel@specmaterials.com](mailto:mrommel@specmaterials.com)

978-322-1986

Tom Foltz – Business Development Director

[tomfoltz@specmateials.com](mailto:tomfoltz@specmateials.com)

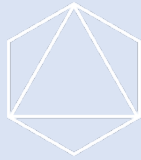
802-253-4647

## KEY PROJECTS OR PRODUCTS

Boron Fiber and Powder

Silicon Carbide Fiber

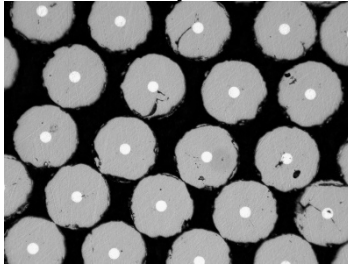
Carbon Fiber



Specialty Materials  
<http://www.specmaterials.com/>

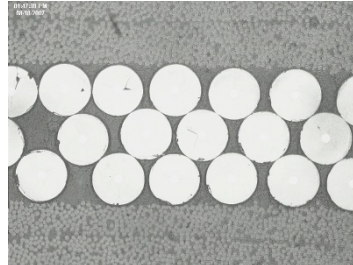
# Three Options for Boron Composites = Many Possibilities

All Boron Fiber Composite



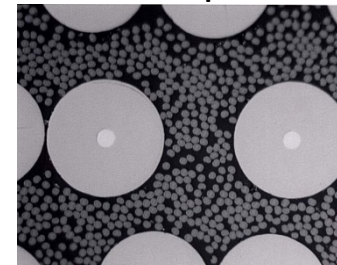
Per Ply Thickness =  
0.004 or 0.0056-inches

Boron /Graphite Fibers Interleafed

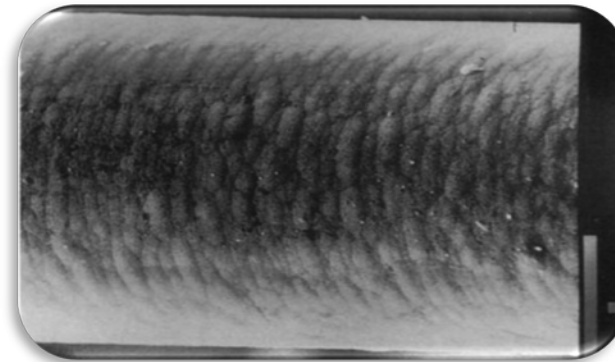
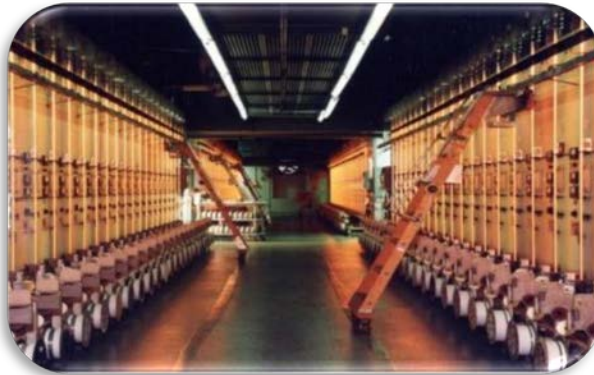


Per Ply Thickness =  
0.004 or 0.0056-inches

Hy-Bor® Prepreg, Mixture of Boron/Graphite Fibers



Per Ply Thickness =  
0.005 to 0.0065-inches



Boron filament surface

